

## ColorSave® 1000 Feeder

Smart technology delivers the highest accuracy in the industry

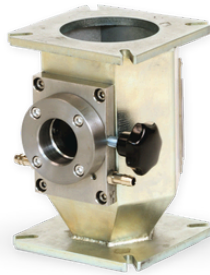


## Neckpiece

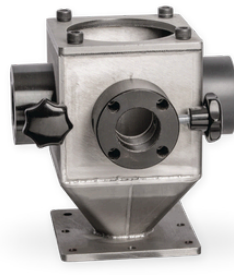
ColorSave 1000 includes a standard neckpiece as per volume of hopper.  
Other types of neckpieces are available on request:



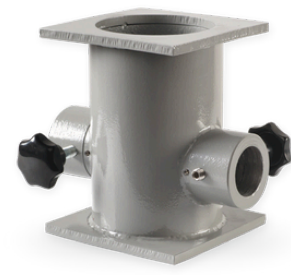
Hexagonal Neckpiece



Cooled Neckpiece



Triple Neckpiece

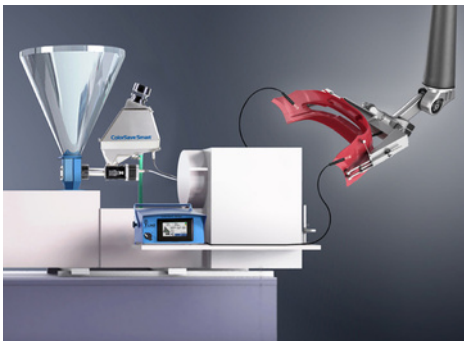


Round Neckpiece



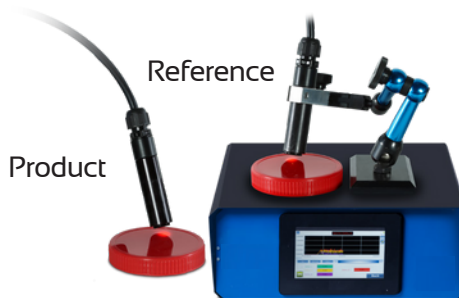
## Venturi Emptying

An Innovative and unique solution which is located at the base of the feeder, extracting the colorant without the need to have physical access to the feeder. It includes a piston that opens during the emptying process, and at the same time air pressure draws out the colorant. The feeder's screw turns backwards to release grains of colorant from the screw area, while an air nozzle releases a jet of air directed towards the feeder's screw for more efficient cleaning.



## ColorSave 1000 can be integrated with Spectro 4.0™ probes

- Measure and correct color in-line
- Predict, correct color inconsistencies in real time



## ColorSave 1000 takes dosing precision to the next level

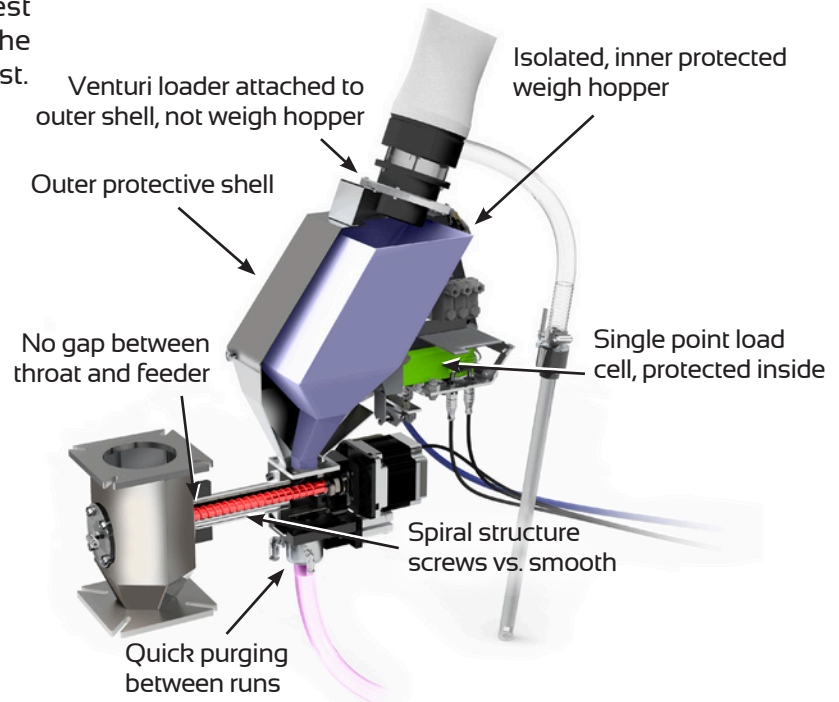
ColorSave 1000 is the only gravimetric feeder that offers Smart-Clean automatic quick purging to purge colorant in just 10 seconds with no manual clean-outs between jobs.

ColorSave 1000 is the only gravimetric feeder that features an Outer Protective Shell with an inner floating weigh hopper and single point load cell to ensure the highest accuracy in the industry. Perfect for industrial settings where vibration and other outside influences can affect the accuracy of weighing. ColorSave 1000 also uses advanced algorithms to deliver unmatched dosing precision regardless of material density changes or other dynamic parameters. You can confidently feed expensive colors and additives at the lowest possible LDR, running at the low end of the tolerance specification to save on masterbatch cost. Now that's smart. LIAD Smart.

## ColorSave 1000 Advantages:

- Extreme accuracy allows precise dosing and prevents overdosing
- Saves masterbatch cost by feeding at the lowest possible LDR
- Smart-Clean automatic quick purging between runs saves manual labor and streamlines production for more up time
- Loss-in-weight controlling function allows optimum adjustment of operating points
- Significantly reduces product rejects and scrap levels
- Suited to any injection molding, extrusion and blow molding machine
- Capable of integration with real-time in-line color management technology

Savings on masterbatch use with ColorSave 1000	Compared to
Up to 35%	Remote batch blending system
Up to 15%	Batch blender at machine throat
Up to 50%	Volumetric feeder



## ColorSave 1000 Applications:

Operation Principle	Batch operation.	Continuous operation.	Continuous operation.
Set Point	Setting of desired masterbatch percentage and shot weight	Setting of desired masterbatch flow rate at lbs/hr (kg/hr) or desired percentage from extruder throughput	Setting of desired masterbatch percentage and product weight
Input Signal	Dry contact input for synchronization with plasticization cycle (and optional with injection cycle)	Dry contact input for synchronization with extruder on/off operation and analog 10V or 24v digital-input O tachometer	Dry contact input for synchronization with extruder on/off operation and dry contact input from blowing machine for synchronization with blow cycle
Data Recording	Accumulated number of injection cycles and masterbatch weight	Accumulated data—total masterbatch consumed in lbs (kg)	Accumulated total masterbatch consumed in lbs (kg) and number of cycles

## ColorSave 1000 Features:

- Smart-Clean feature automatically quick purges the feeder to improve safety and save time
- Stores up to 500 recipes, shortened setup time
- Easy replacement of feeding screw
- Easy maintenance and cleaning when switching colors and materials
- Optional integrated automatic Venturi vacuum loader for masterbatch
- Real-time data collection and management of material consumption using control software

Dimensions In. (mm)	3 Liter Hopper	5 Liter Hopper	10 Liter Hopper
A	23.0 (586)	25.0 (636)	26.2 (665)
B	7.3 (186)	8.3 (210)	9.8 (250)
C	10.9 (277)	11.4 (290)	13.4 (340)
D	19.3 (490)	19.3 (490)	19.7 (500)
E	4.2 (106)	4.2 (106)	3.7 (95)
F	5.5 (140)	5.5 (140)	5.5 (140)
G	7.9 (200)	7.9 (200)	7.9 (200)
H	2.6-1.6 (65-40)	2.6-1.6 (65-40)	5.0-2.8 (128-70)
I	3.5 (90)	3.5 (90)	3.5 (90)

## ColorSave 1000 Specifications:

Feature	Specification
Hopper	3/5/10 Liter
Output Range	0.0422 lb/hr (0.2100 kg/hr) In volumetric mode 0.0485 lb/hr (0.0220 kg/hr)
Motor	Powerful step motor
Display	4.3" (109 mm) Color touch screen
Input Signals Injection Molding	Dry contact for synchronization with plasticization cycle, optional dry contact for synchronization with injection cycle
Input Signals Extrusion	Dry contact for synchronization with extruder on/off operation, synchronization using analog input 010-V or 24V digital tachometer
Input Signals Blow Molding	Dry contact for synchronization with extruder on/off operation, dry contact for synchronization with mold cycle
Recipes	500
Communication	Modbus TCP/IP
Load Cell	33 lb (15 kg) for 3 or 5 liter volume, 66.1 lb (30 kg) for 10 liter volume. Temperature compensated
Loader	Optional automatic integral Venturi vacuum loader
Mounting & Feeding	By neckpiece adapter, directly into the machine throat
Alarm Output	N/O or N/C dry contact, 24V/30mA max.
Weight	3 liter-35.3 lb (16 kg), 5 liter-(39.7 lb) 18 kg, 10 liter-75 lb (34 kg), Controller-11.0 lb (5 kg)
Power	100-240v, 200W, 50/60hz

## ColorSave 1000 Dimensions

